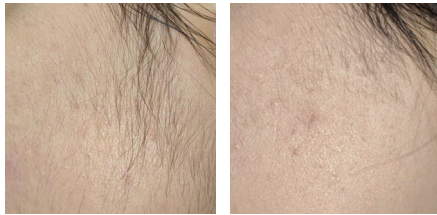


FUSION *light* FUSION *dark*

LASER HAIR REMOVAL



BEFORE & AFTER



DR. S. MULHOLLAND



DR. S. MULHOLLAND



DR. S. MULHOLLAND



DR. S. MULHOLLAND

BEFORE & AFTER



INMODE



INMODE



INMODE



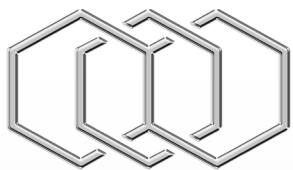
SALIENT



INMODE
WWW.INMODEMD.COM
VPBFUS0724



INMODE



INTRODUCING THE BEST VERSION OF YOU.

Experience safe and effective hair removal with Fusion Light and Fusion Dark technologies.

Fusion Light is designed for lighter skin tones, while Fusion Dark targets coarse and stubborn hair on darker skin tones, ensuring tailored treatments for all skin types.

Achieve smooth skin and permanent hair removal.

**ADVANCED TECHNOLOGY.
ENHANCED TREATMENTS.
EXCEPTIONAL RESULTS.**

SAFE HAIR REMOVAL FOR ALL SKIN TYPES.

With its innovative triple contact and continuous cooling applicator, Fusion ensures your procedures are comfortable and pain-free. After only a few sessions, you will notice smoother, hair-free skin.

Engineered for all skin types, Fusion delivers highly efficacious hair removal procedures with lasting results.

Take control of your face, body, and self-confidence.

Look as incredible as you feel.

